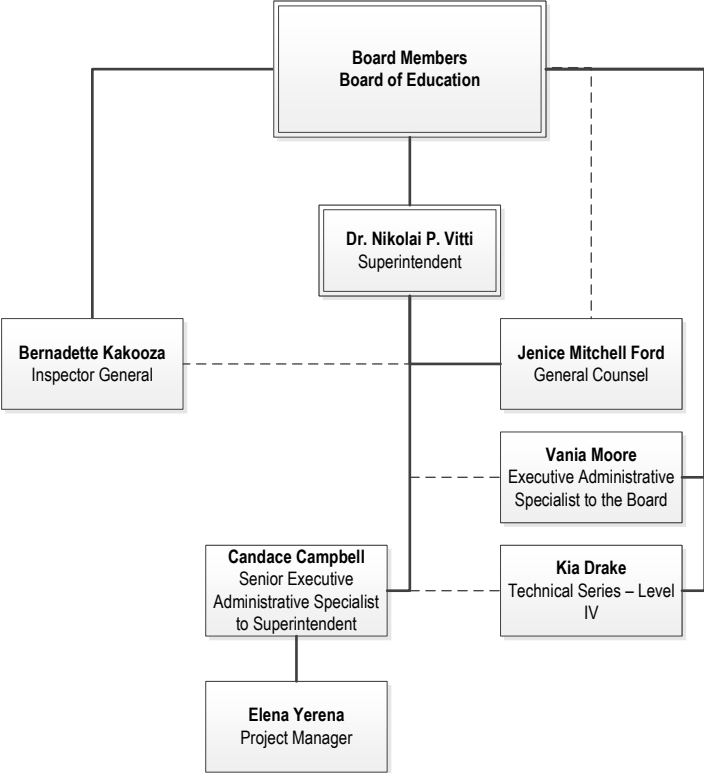




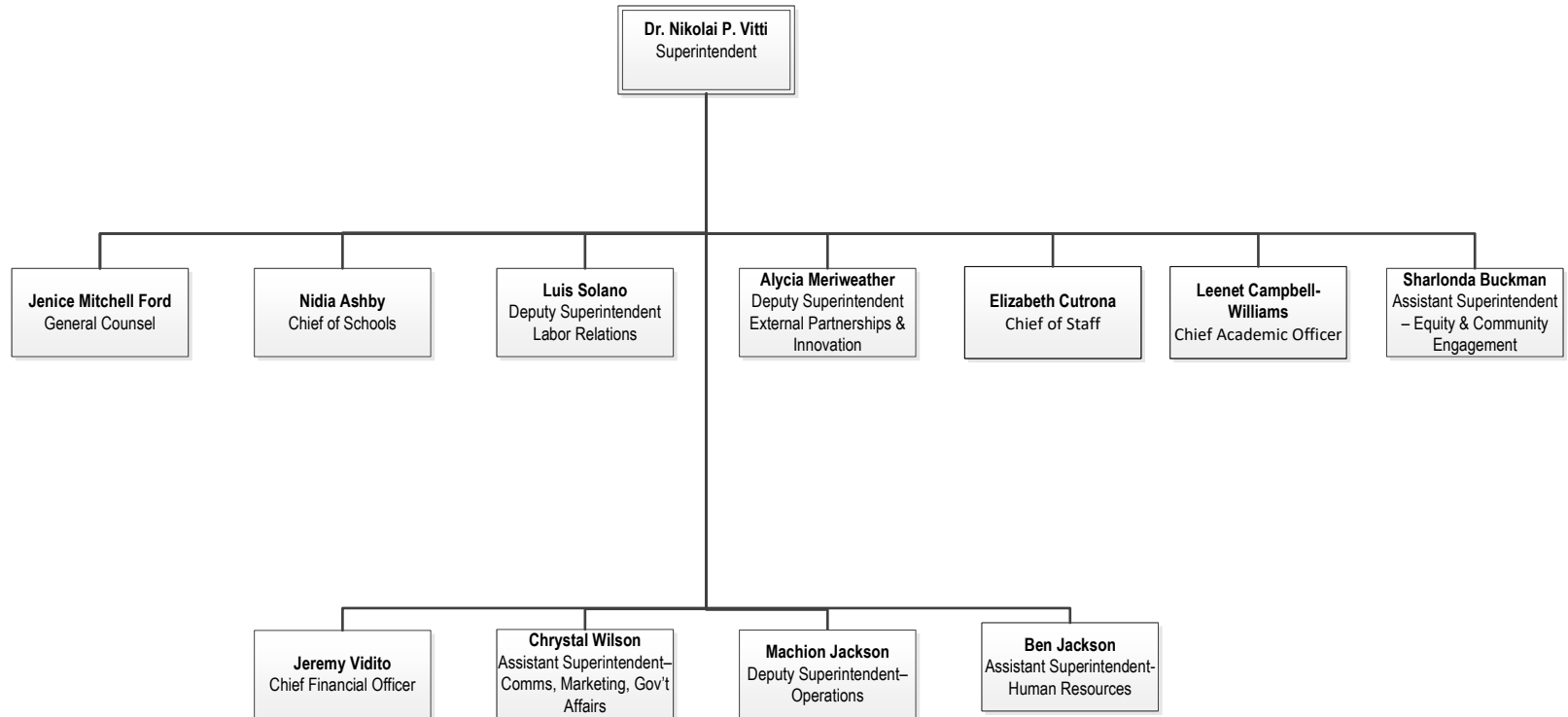
2023-2024

Central Office Organizational Charts

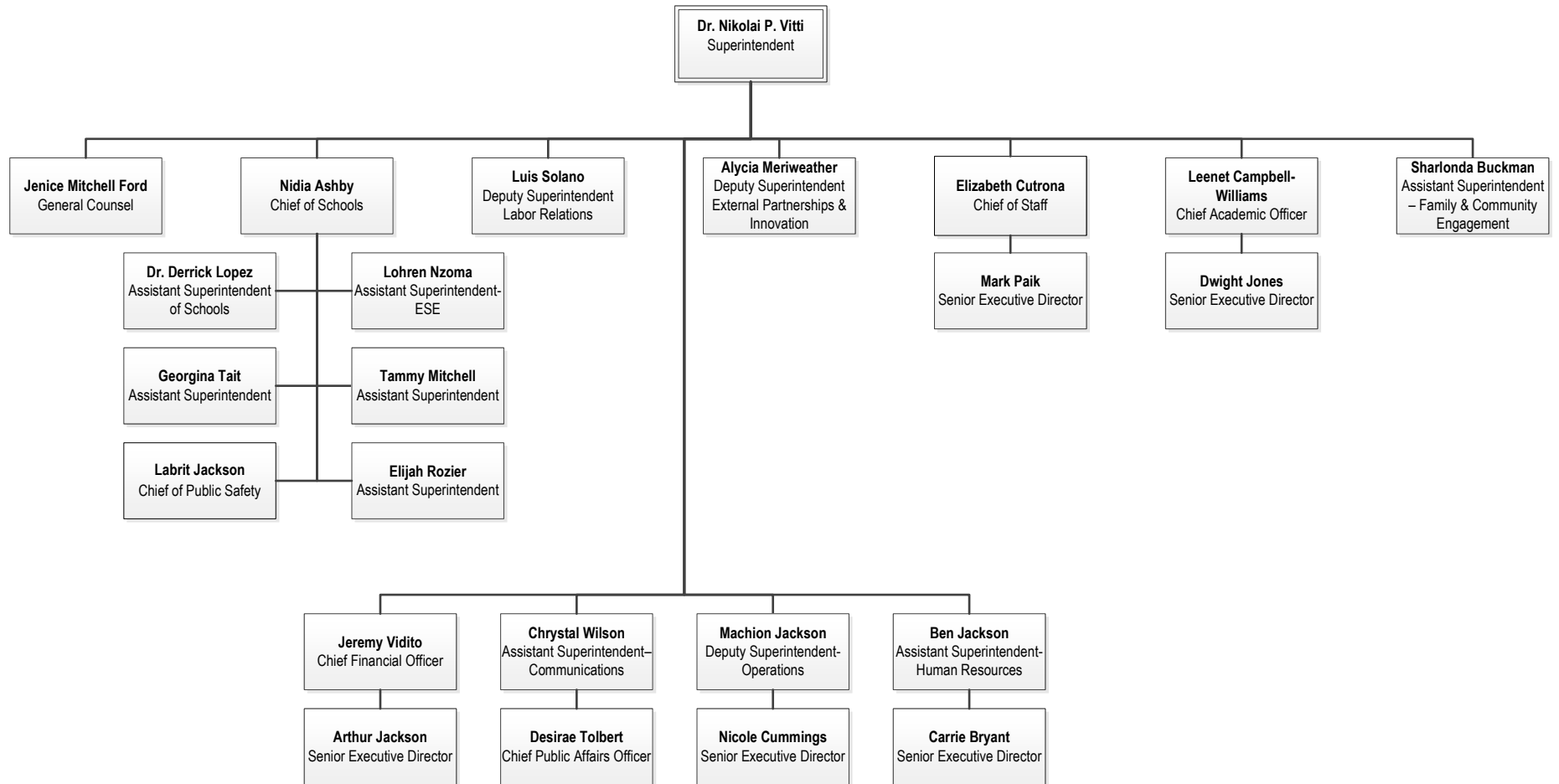
Board of Education and Office of the Superintendent



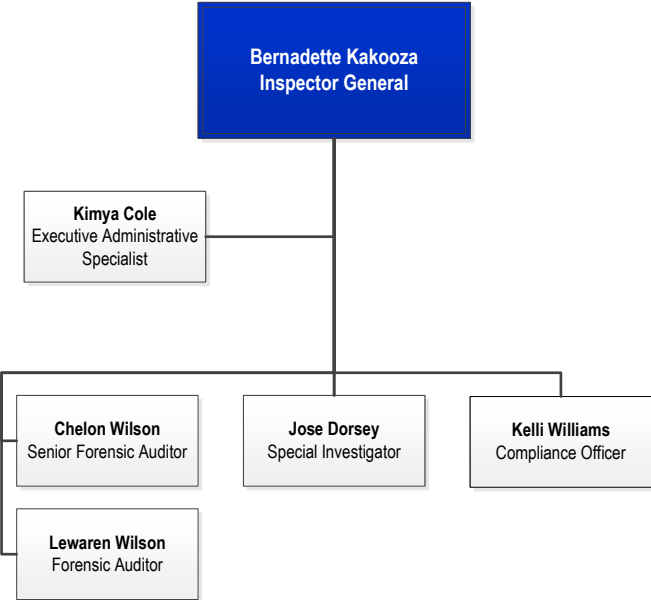
Superintendent's Cabinet



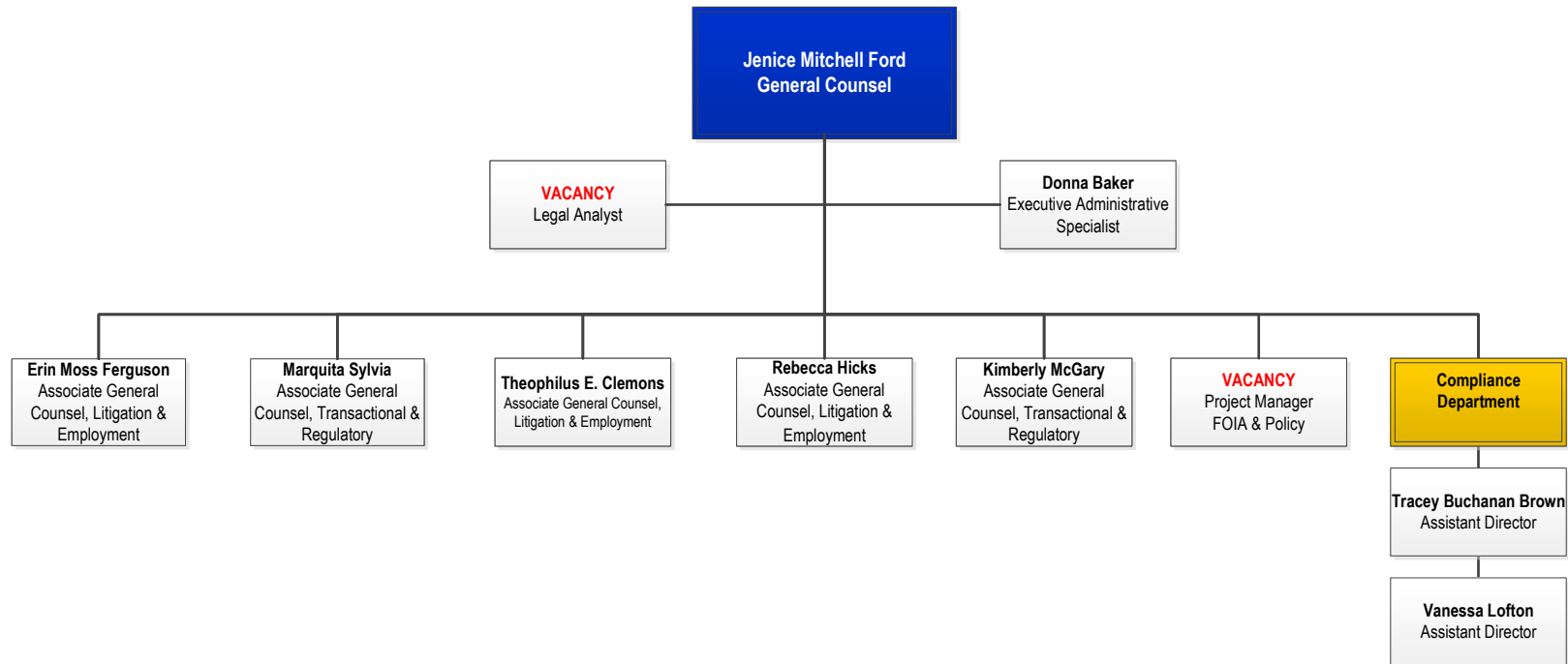
Superintendent's Senior Staff



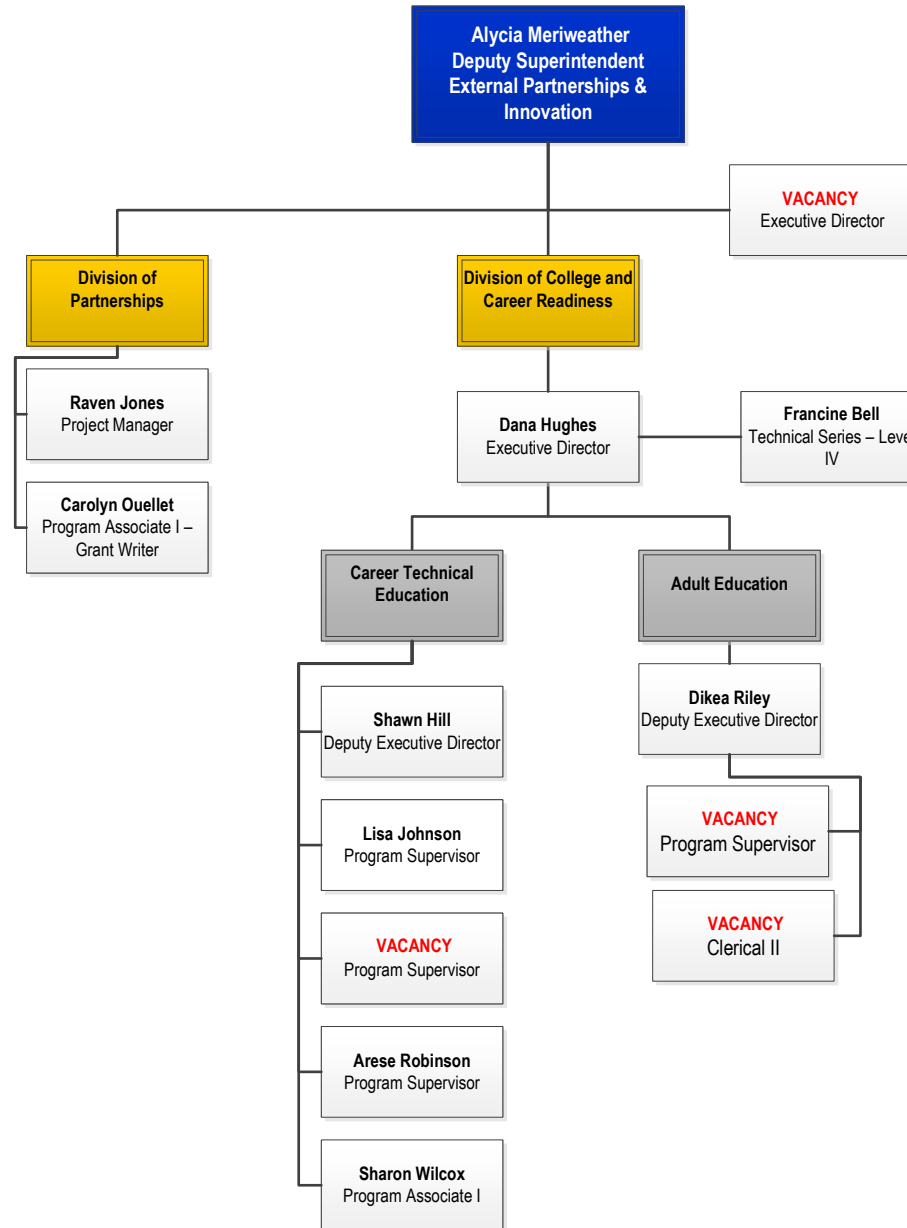
Office of Inspector General



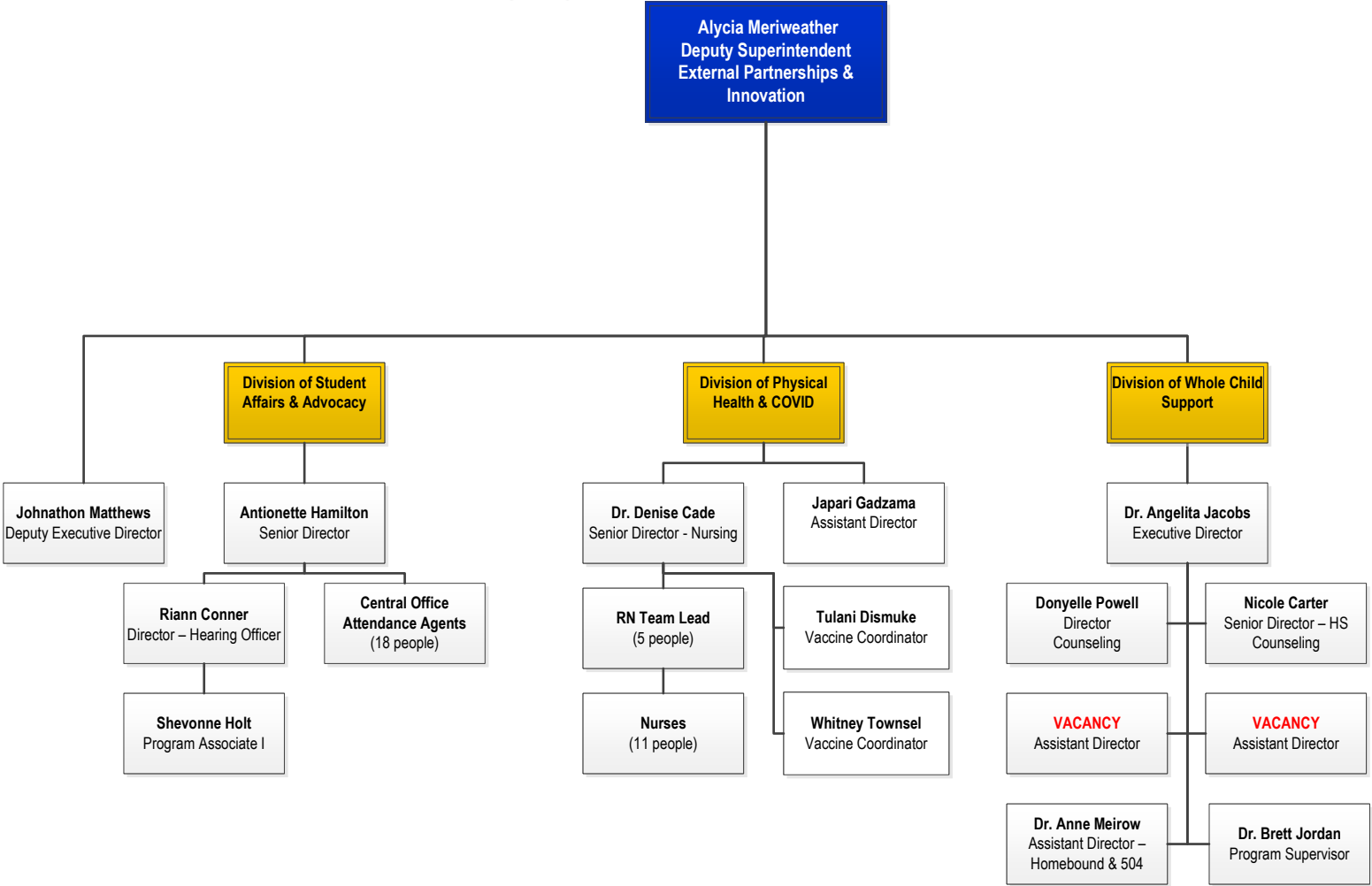
Office of General Counsel



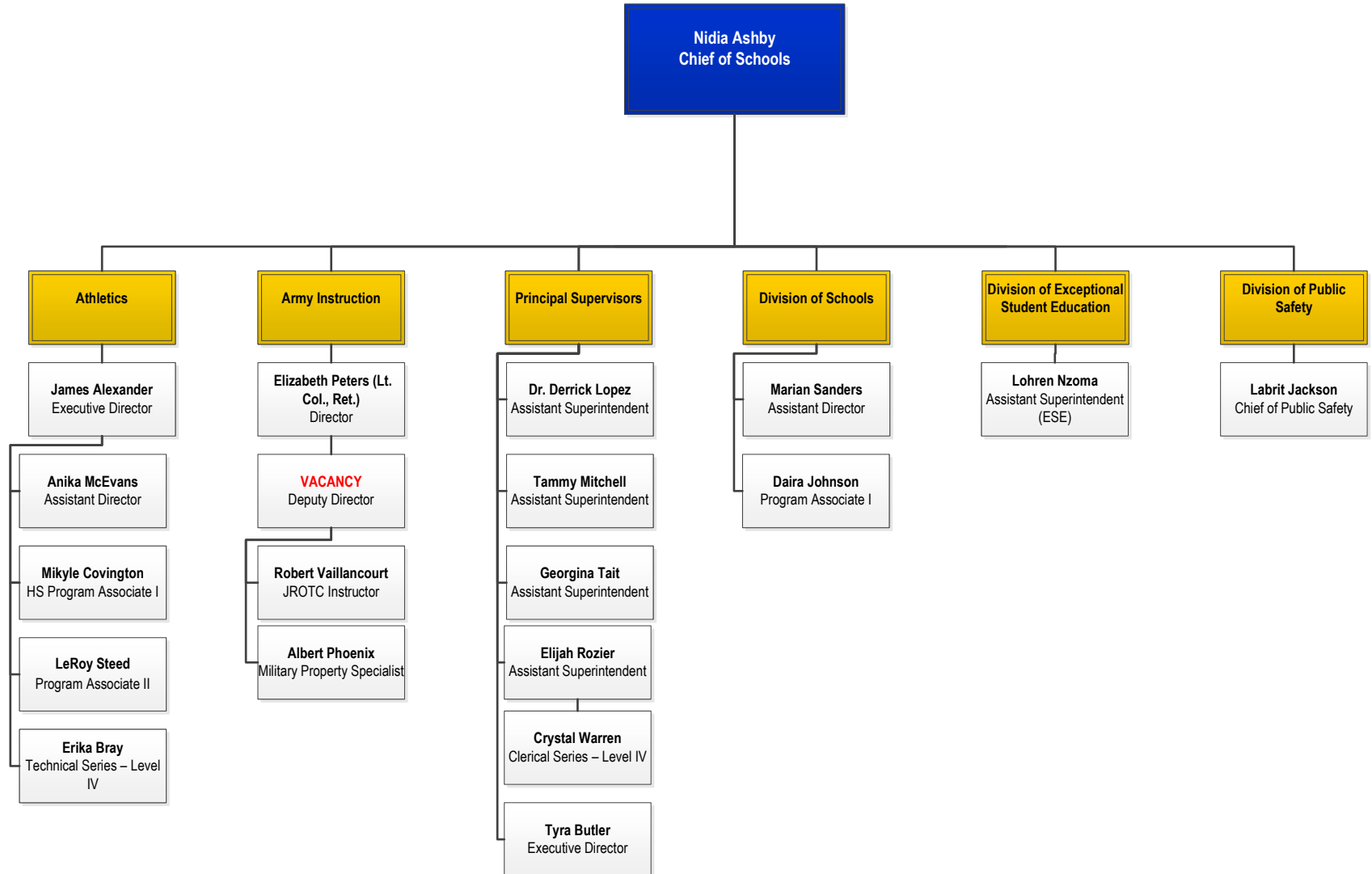
Office of Partnerships, Innovation and Whole Child Support



Office of Partnerships, Innovation and Whole Child Support

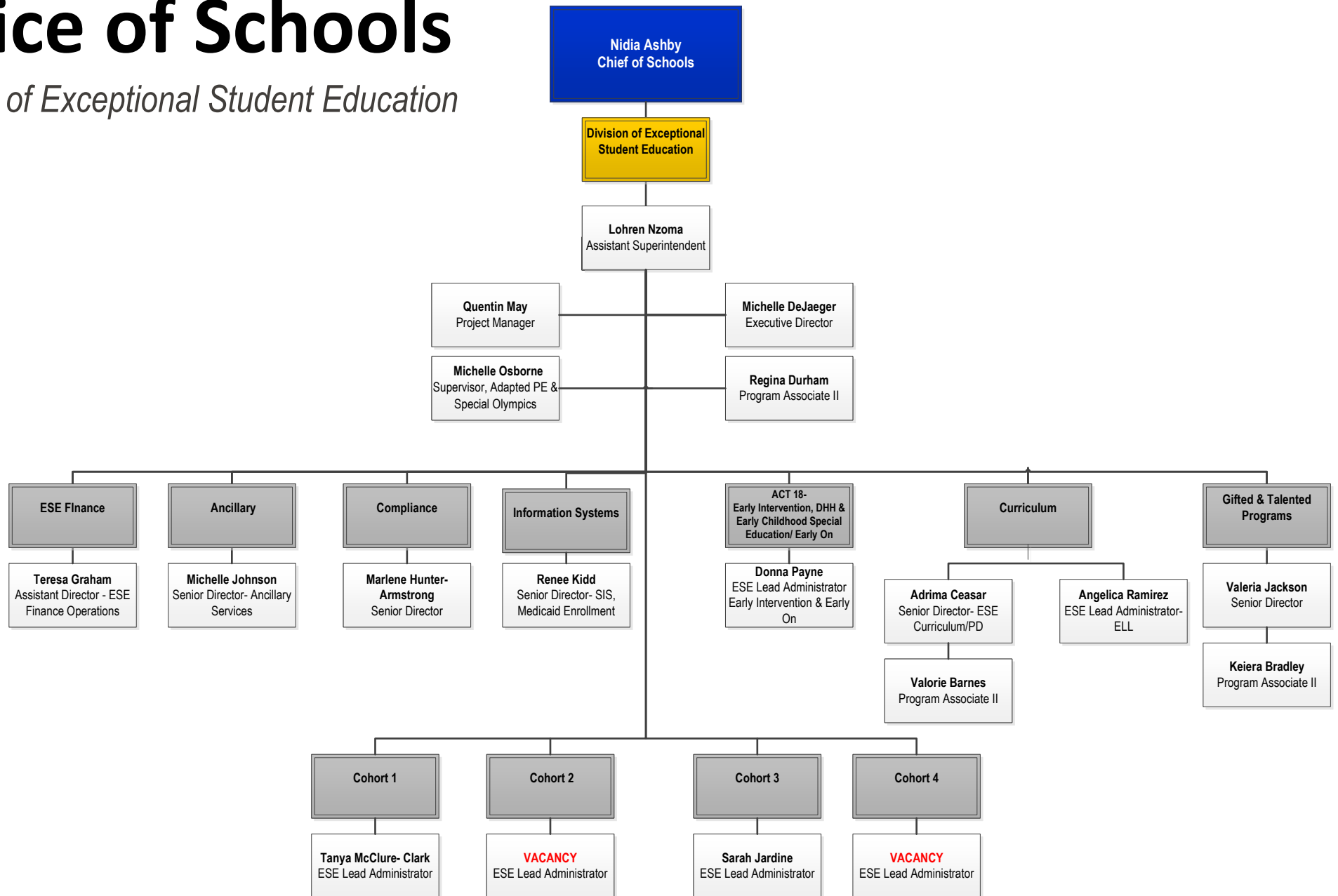


Office of Schools



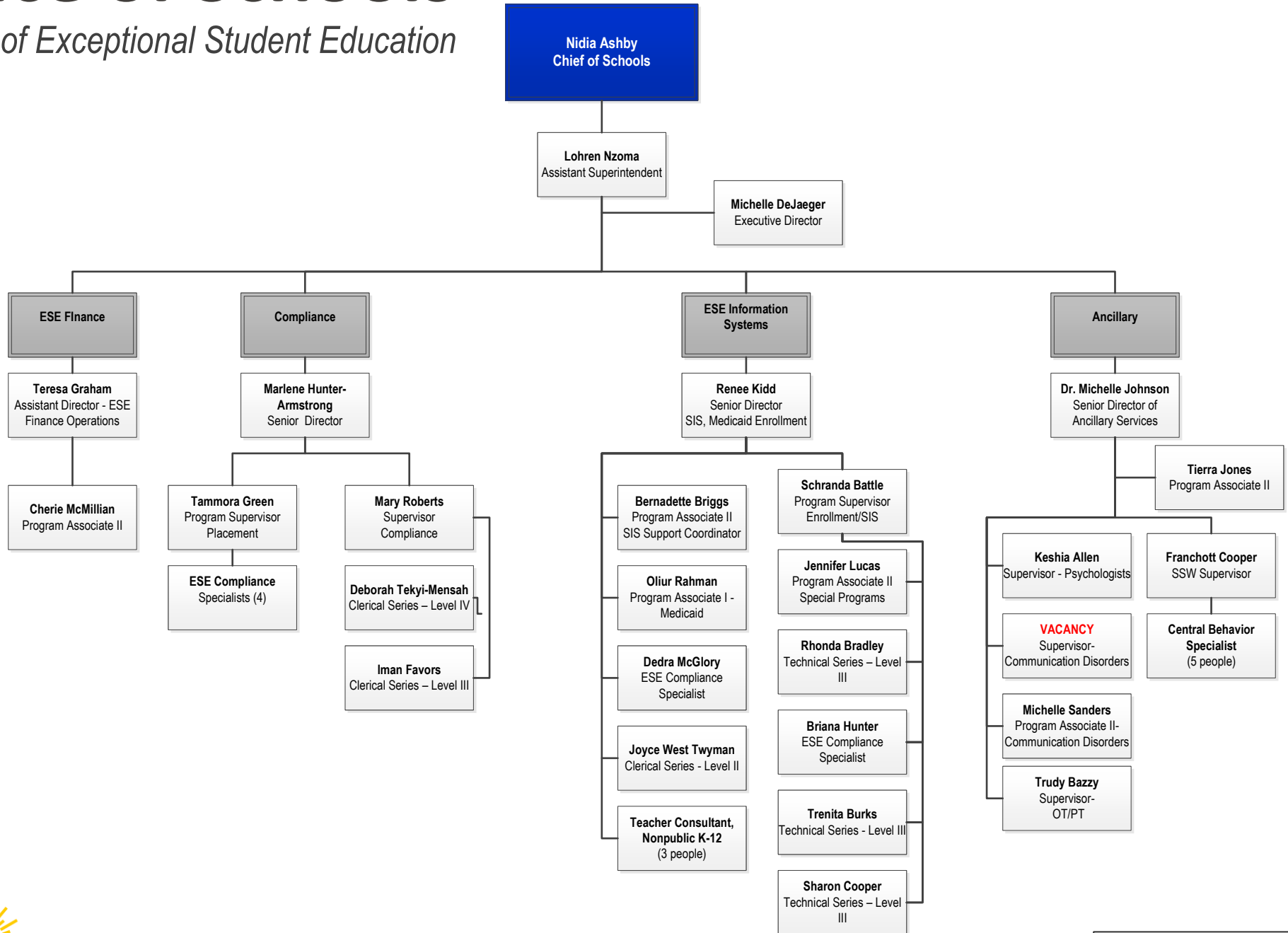
Office of Schools

Division of Exceptional Student Education



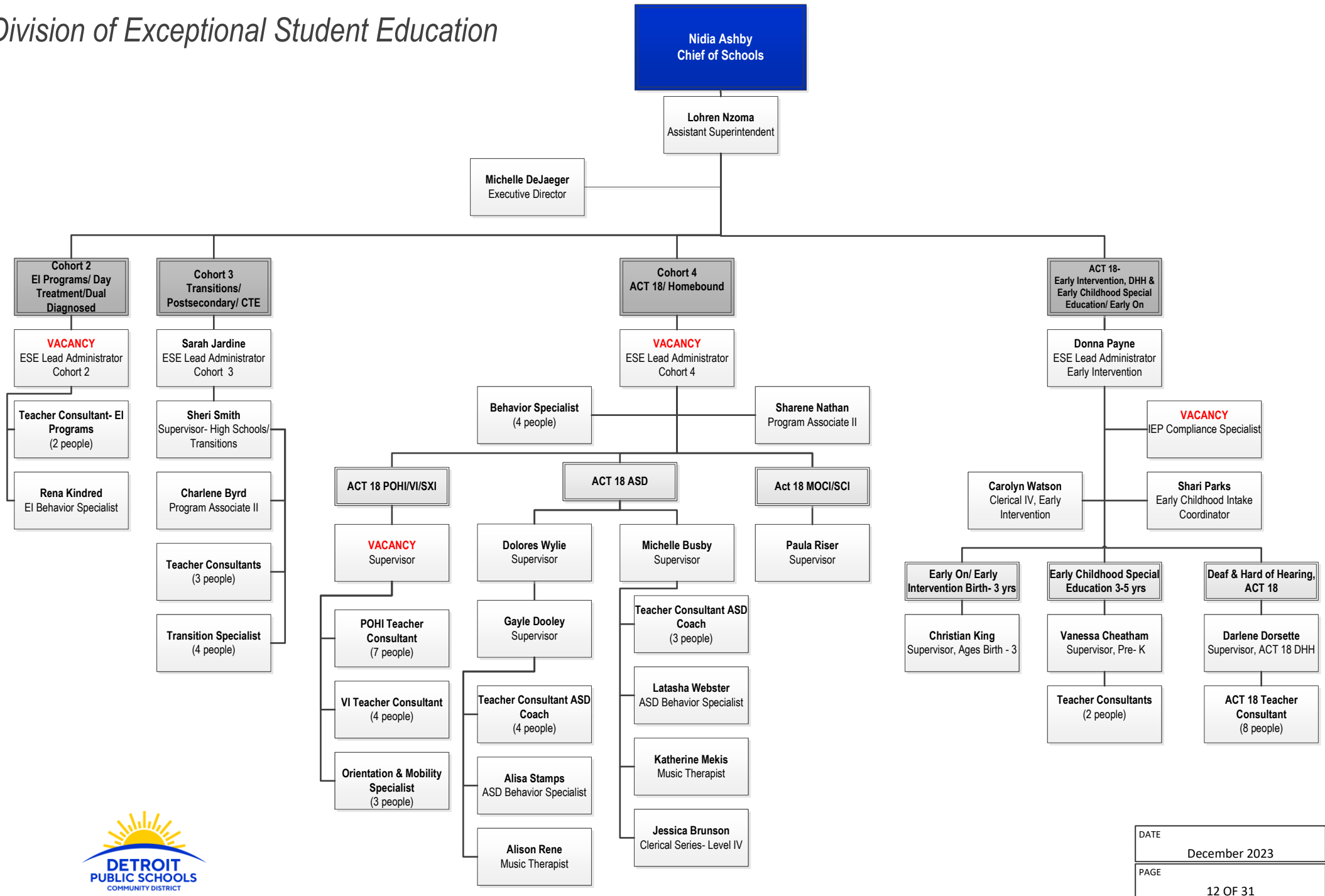
Office of Schools

Division of Exceptional Student Education



Office of Schools

Division of Exceptional Student Education



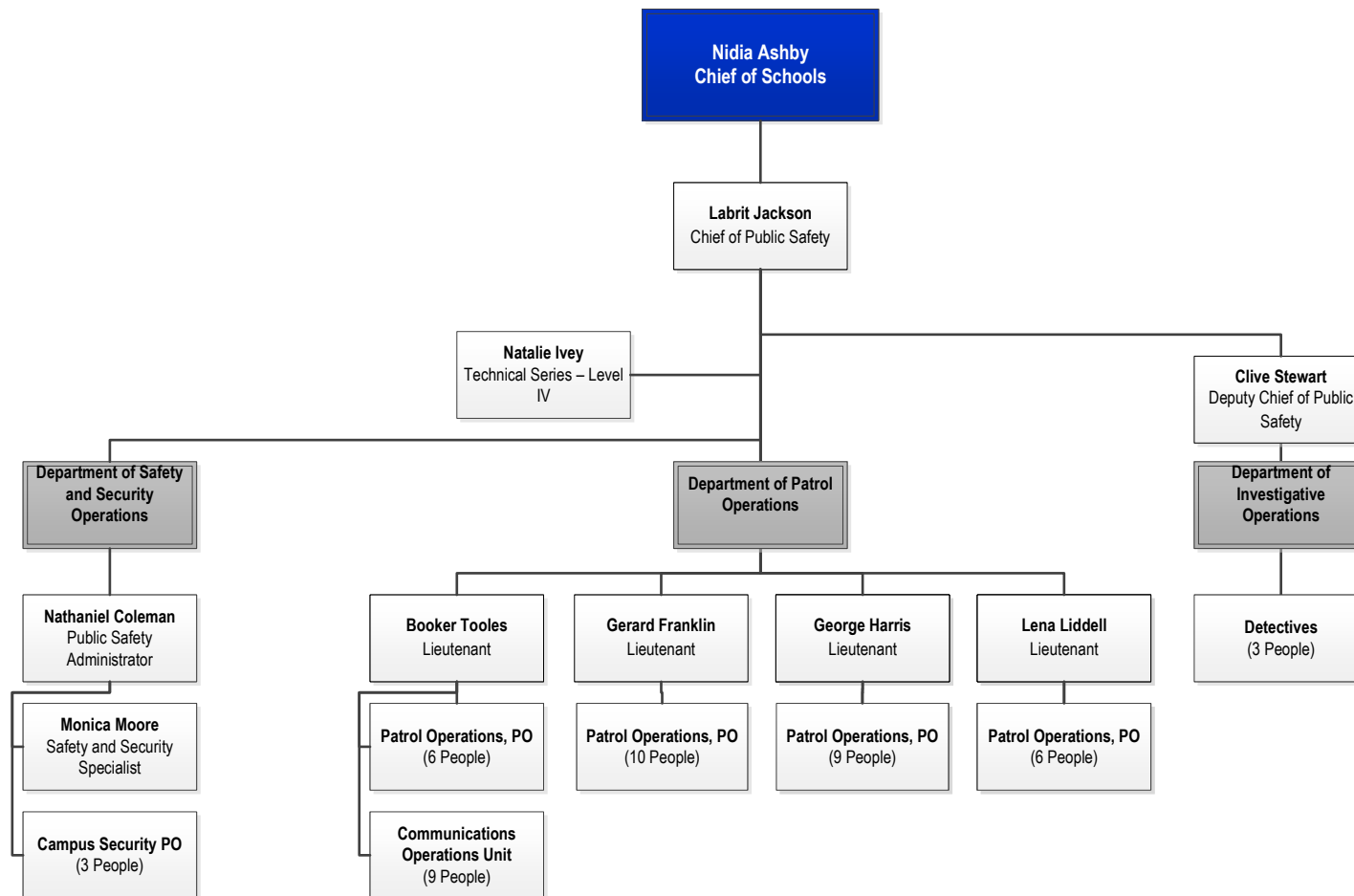
DATE

December 2023

PAGE

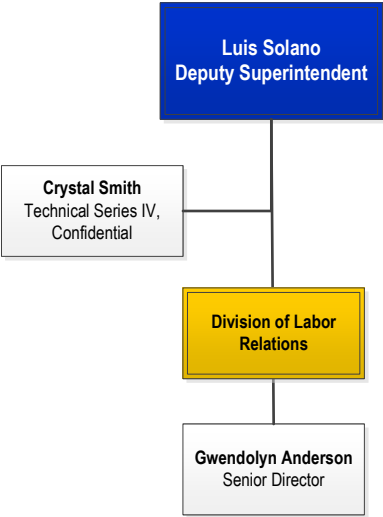
12 OF 31

Office of Public Safety

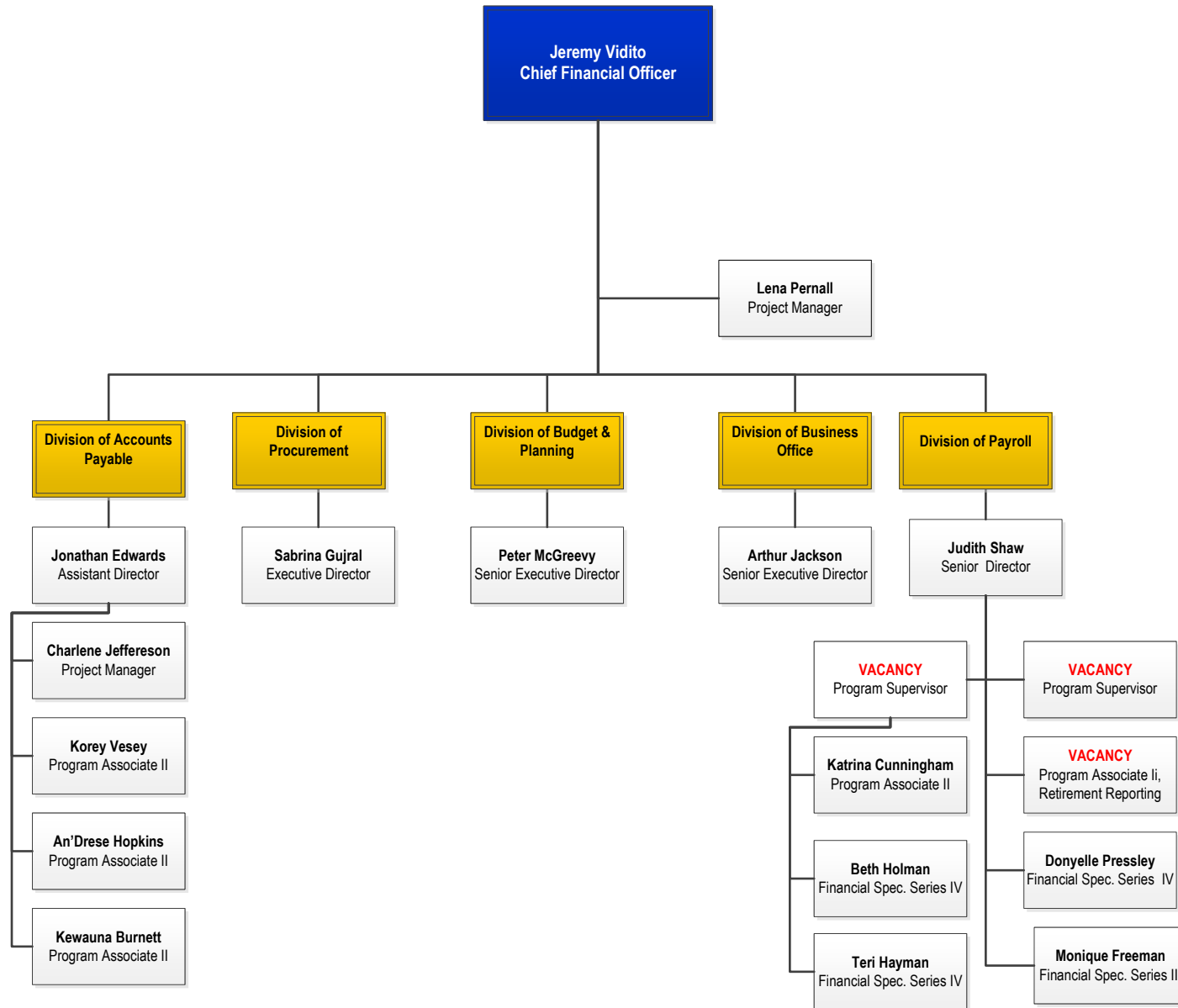




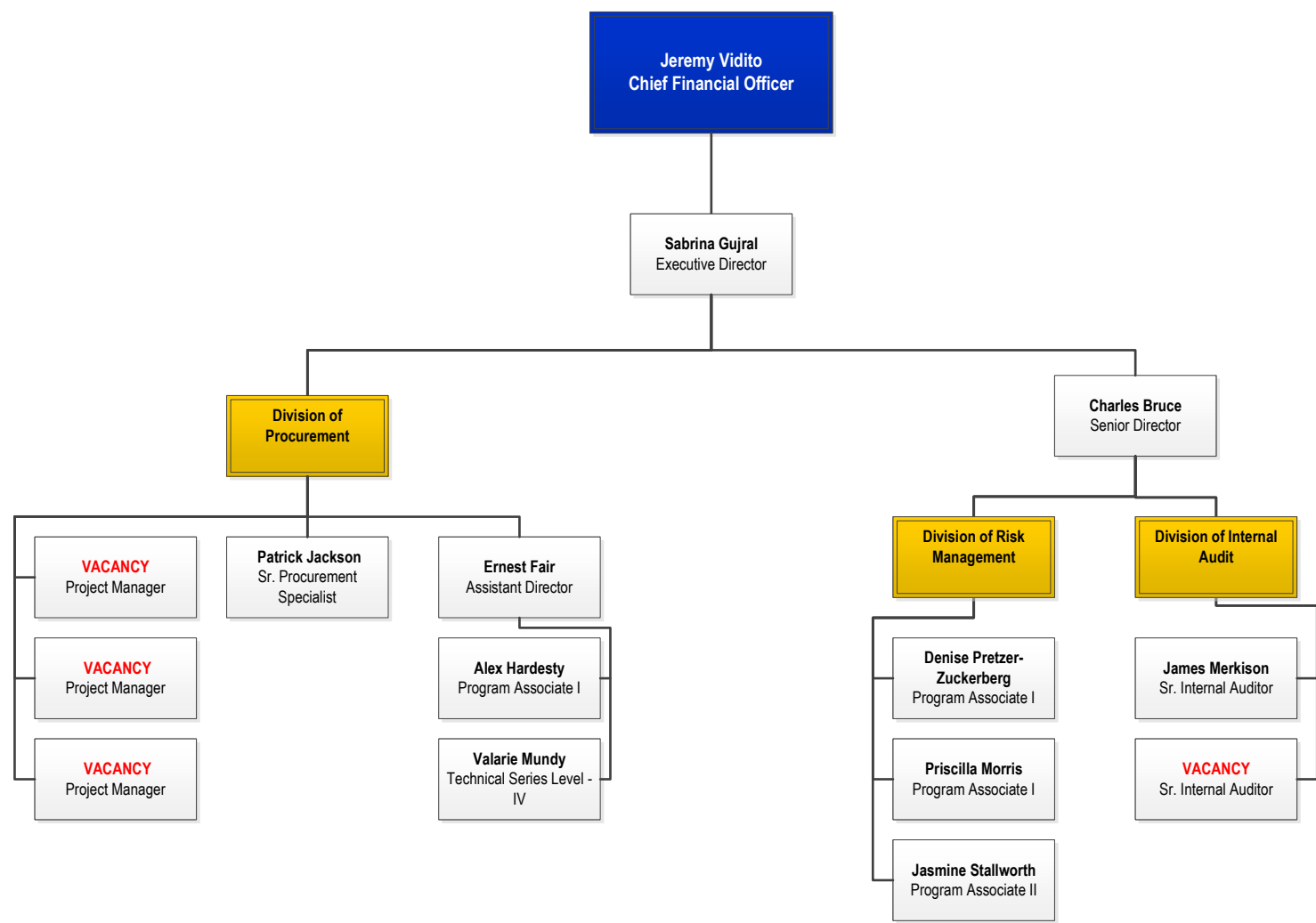
Office of Labor Relations



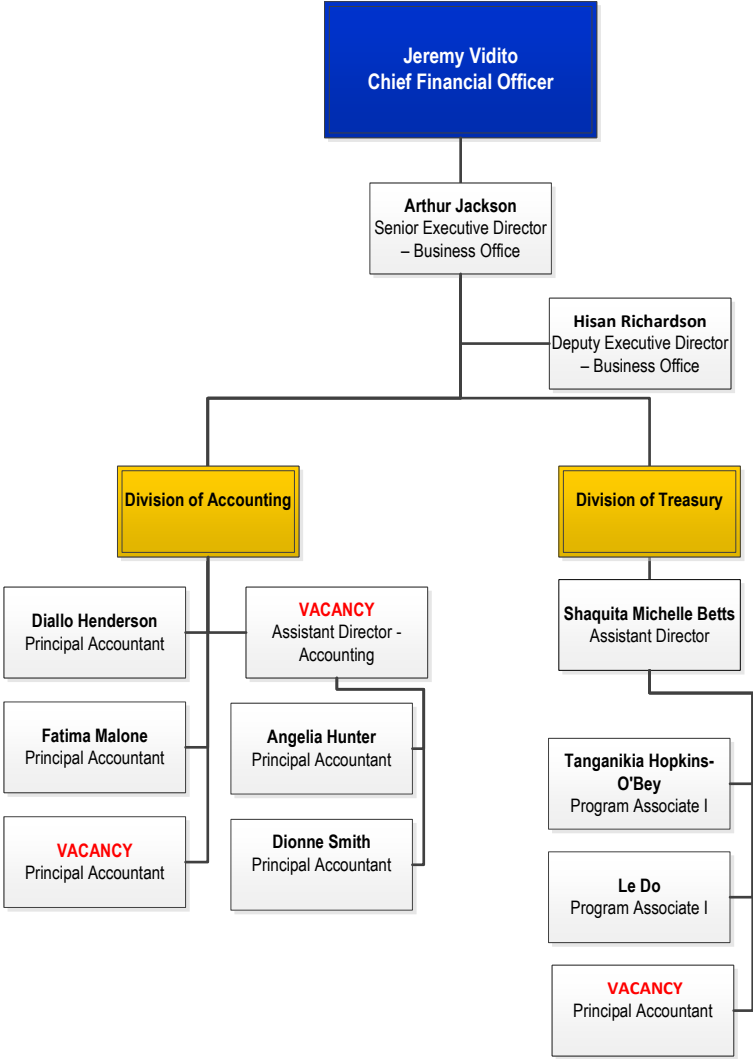
Office of Finance



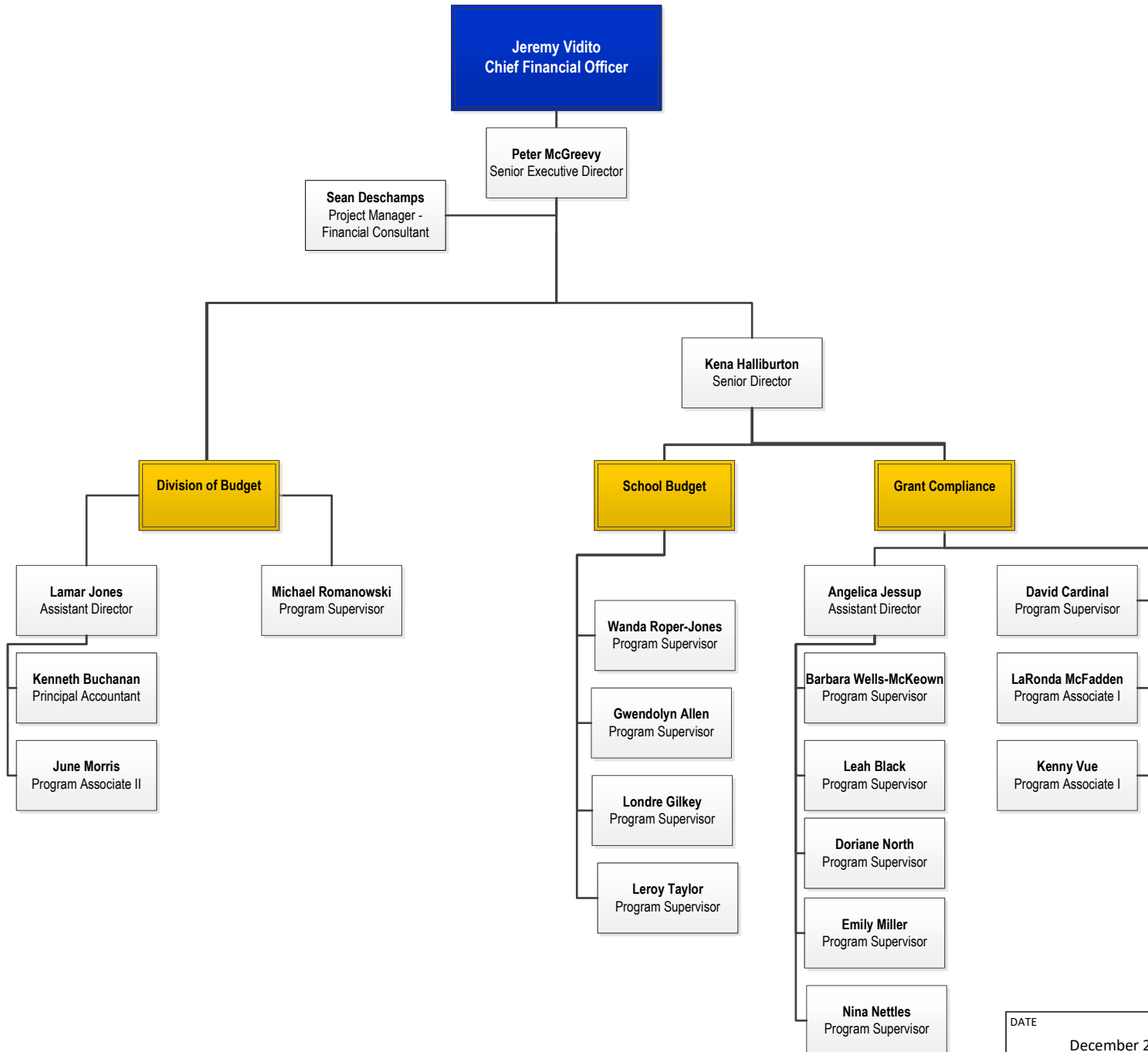
Office of Finance



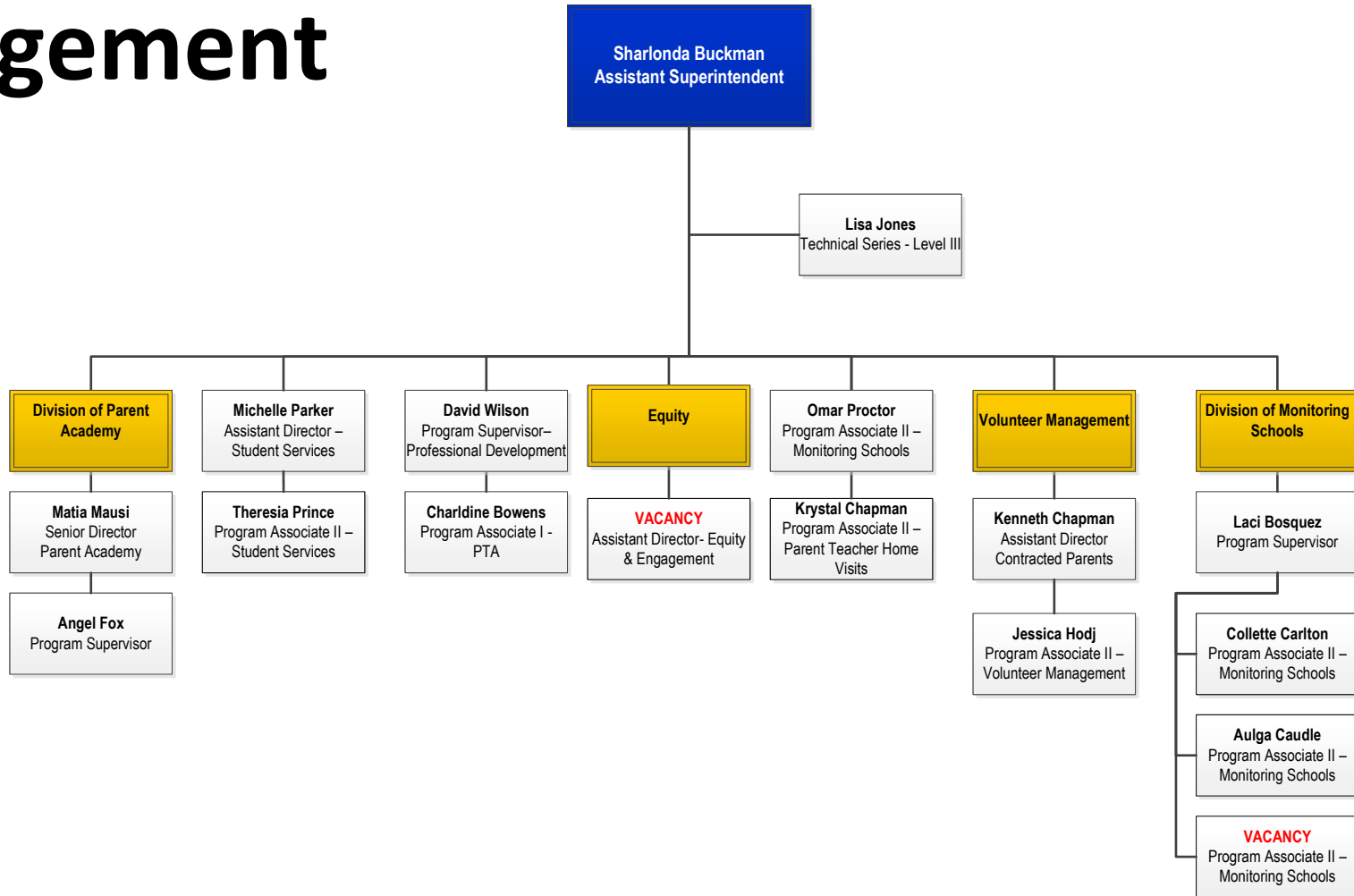
Office of Finance



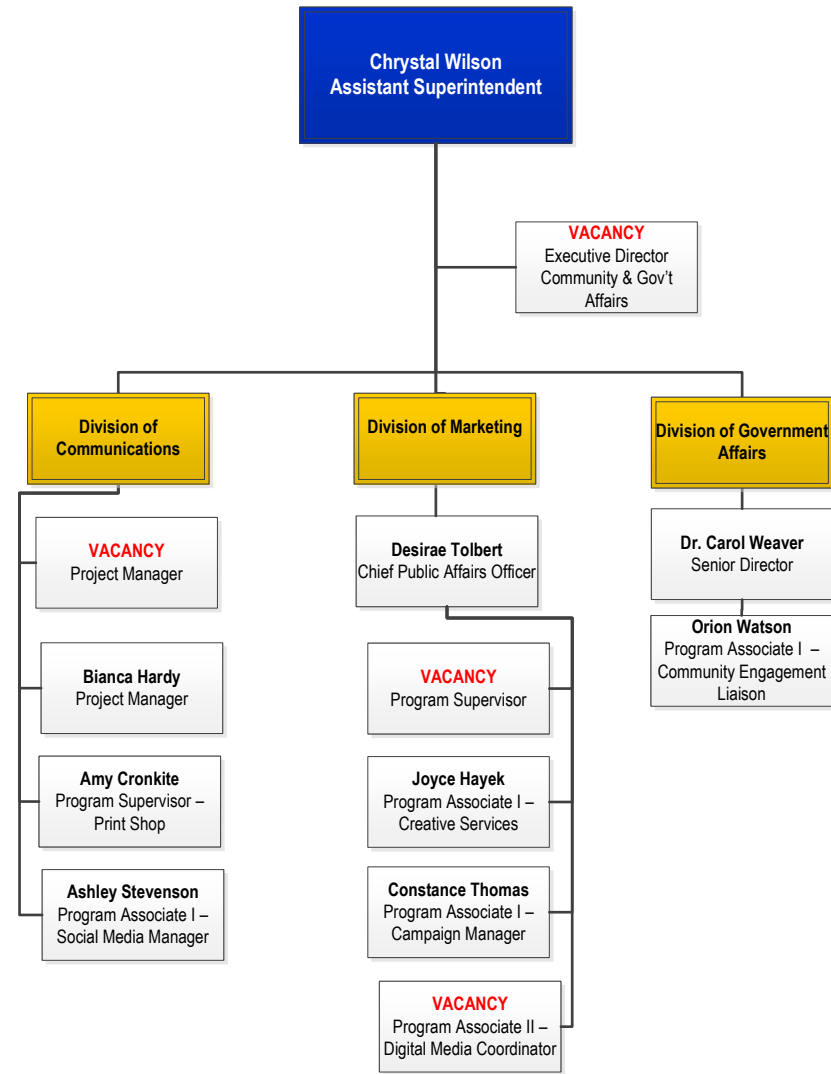
Office of Finance



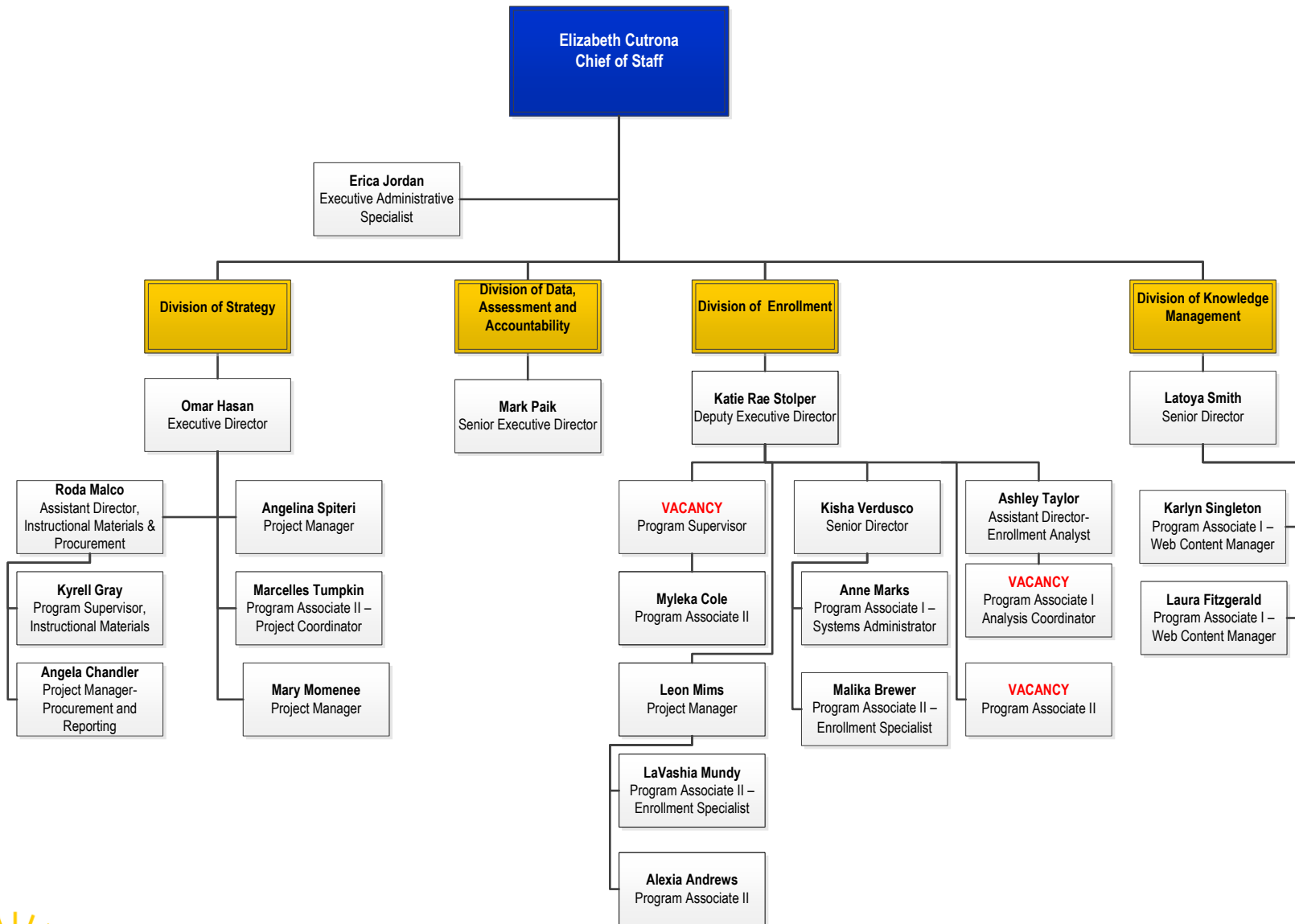
Equity, Family & Community Engagement



Office of Communications, Marketing & Government Affairs

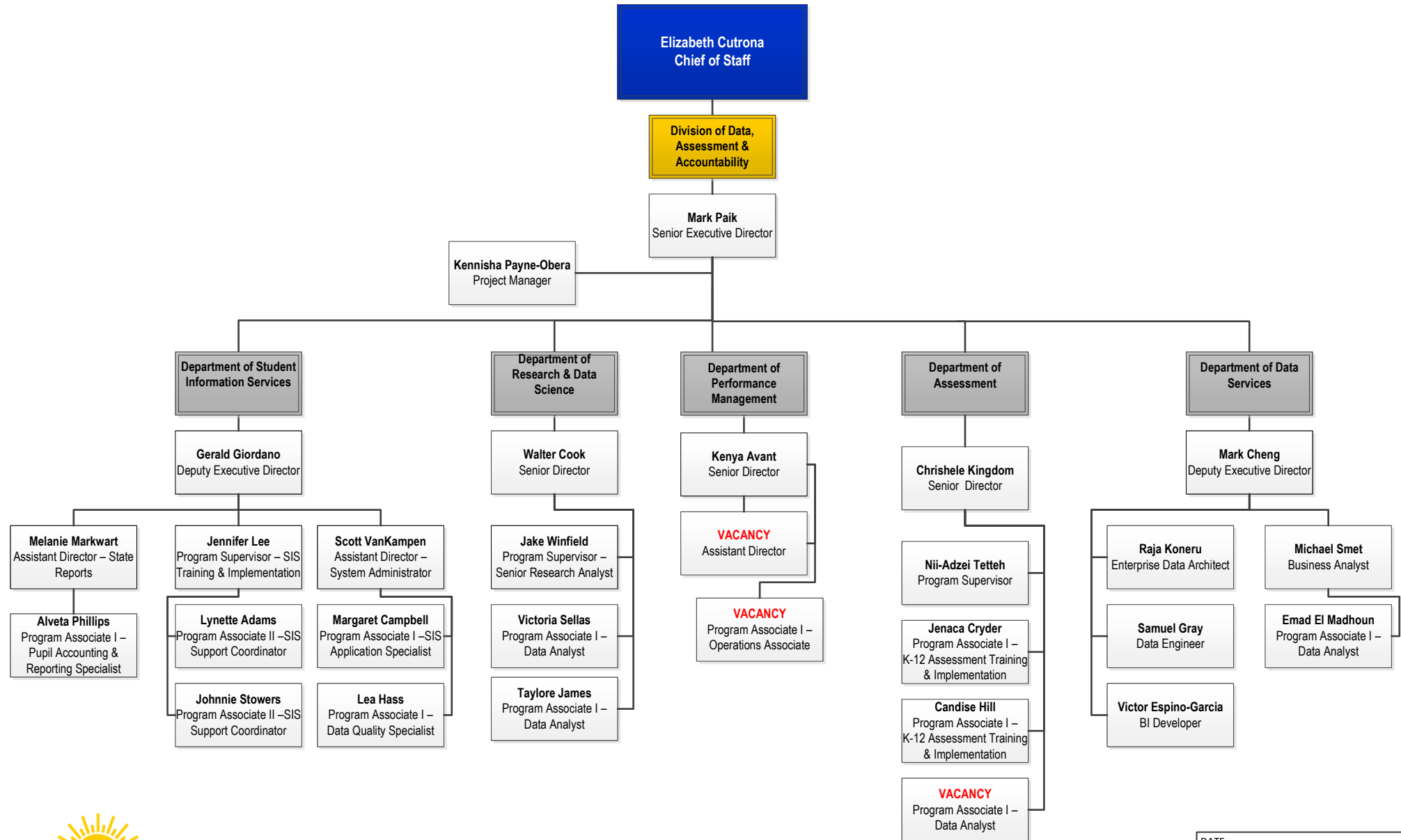


Office of the Chief of Staff

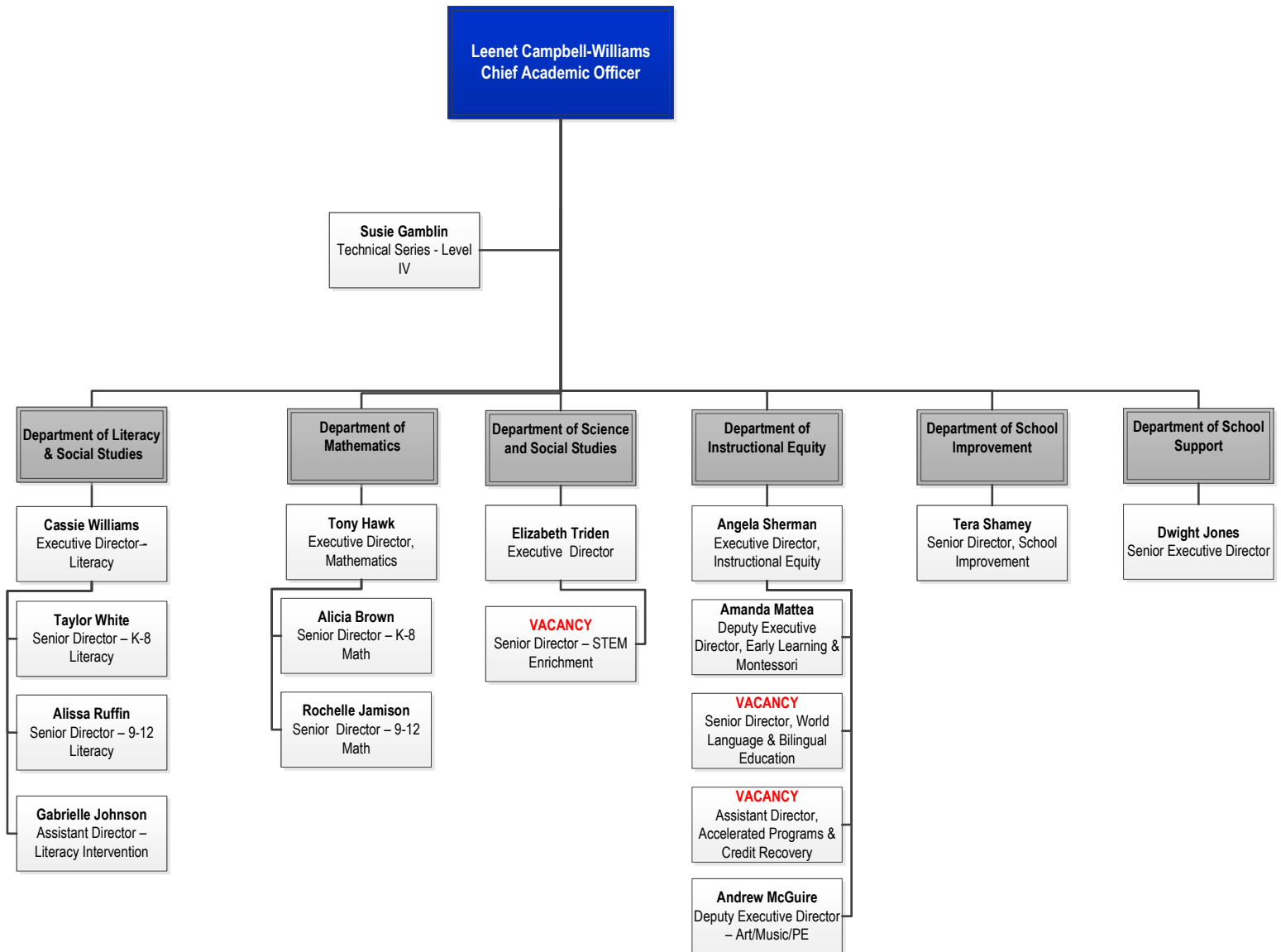


Office of the Chief of Staff

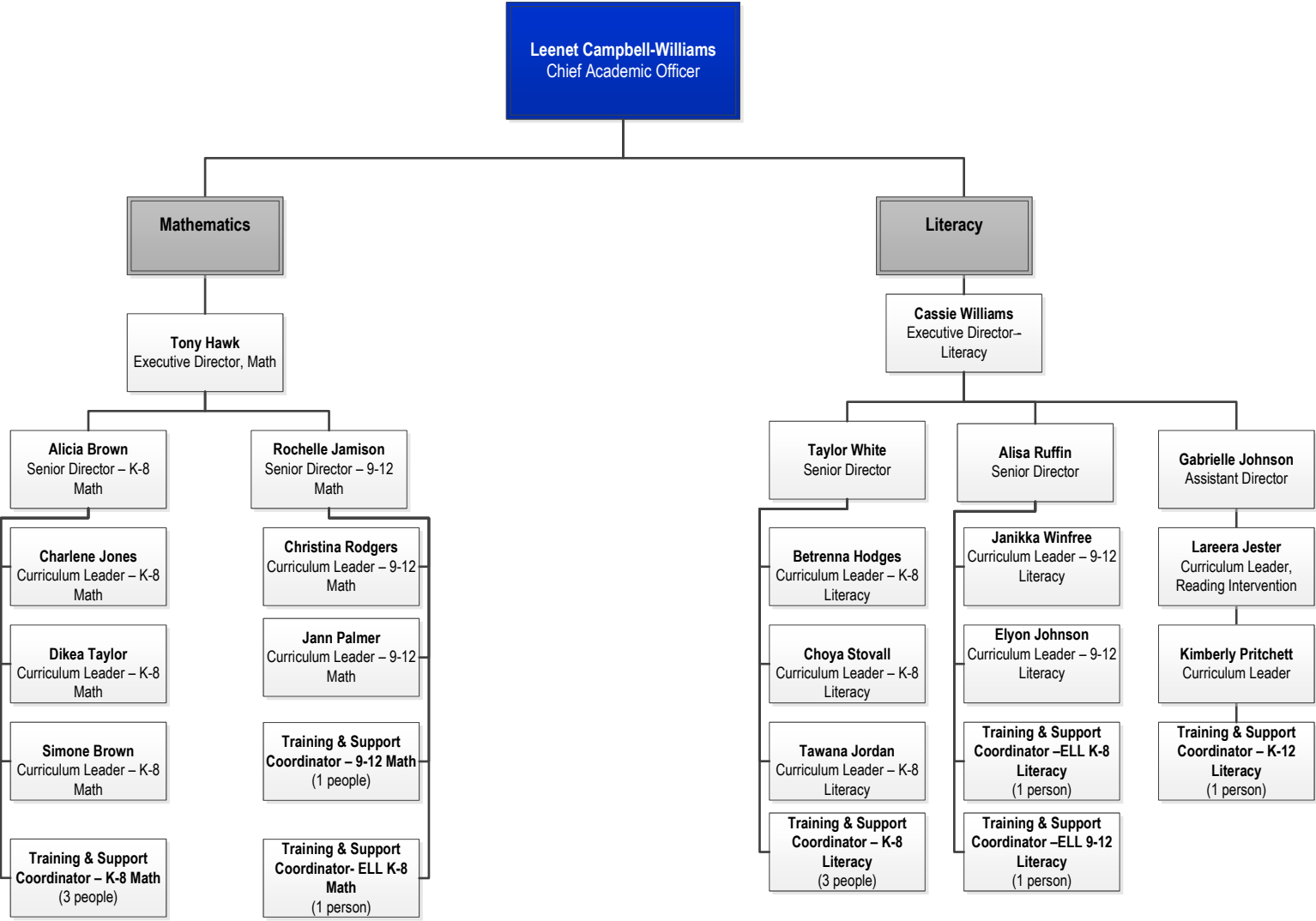
Division of Data, Assessment & Accountability



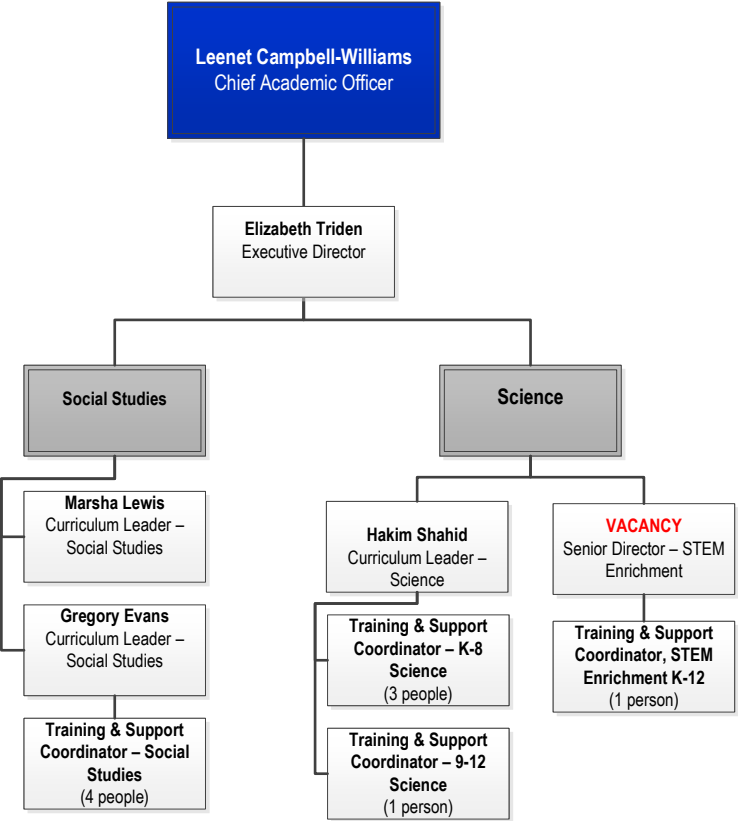
Office of Academics



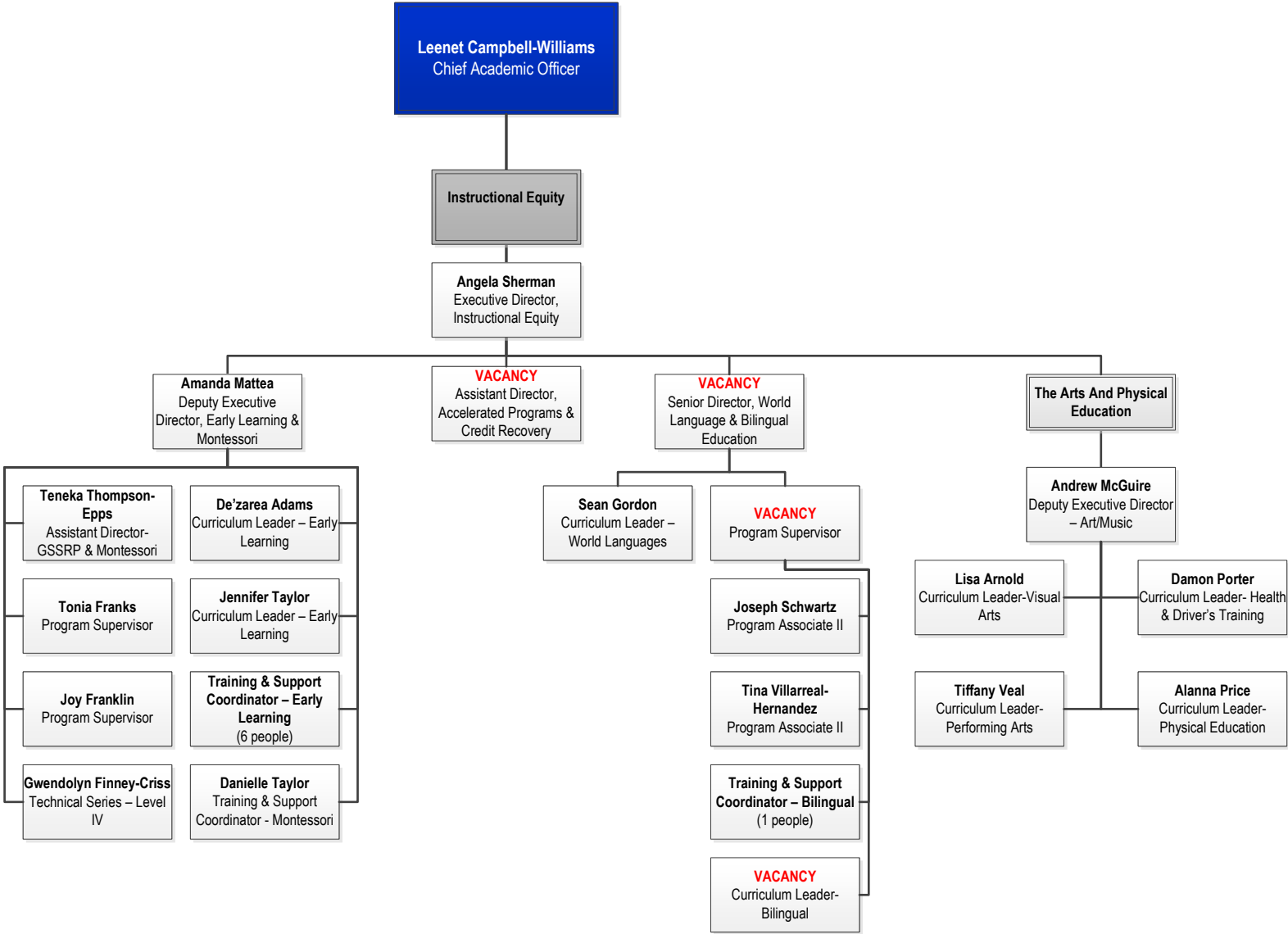
Office of Academics



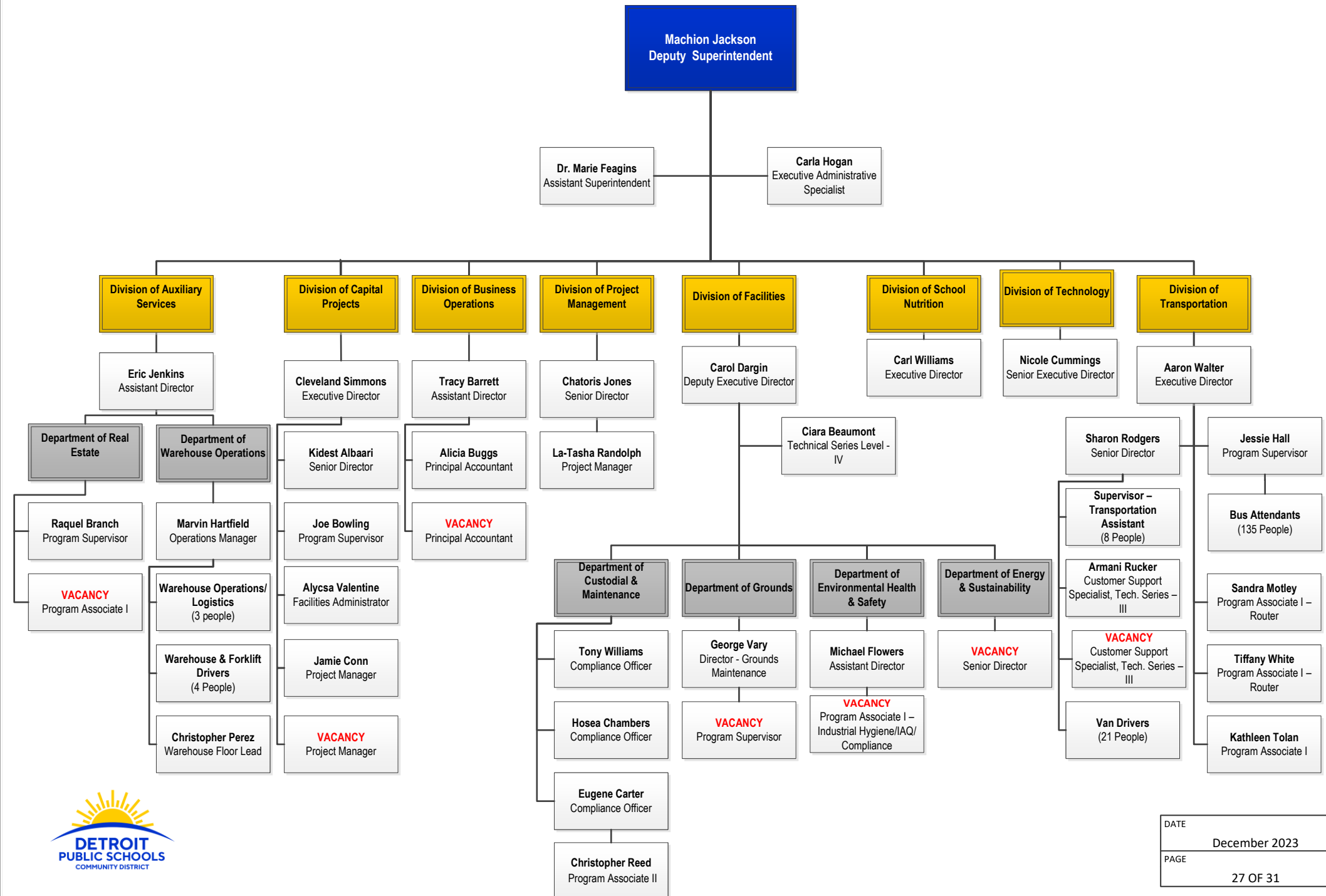
Office of Academics



Office of Academics

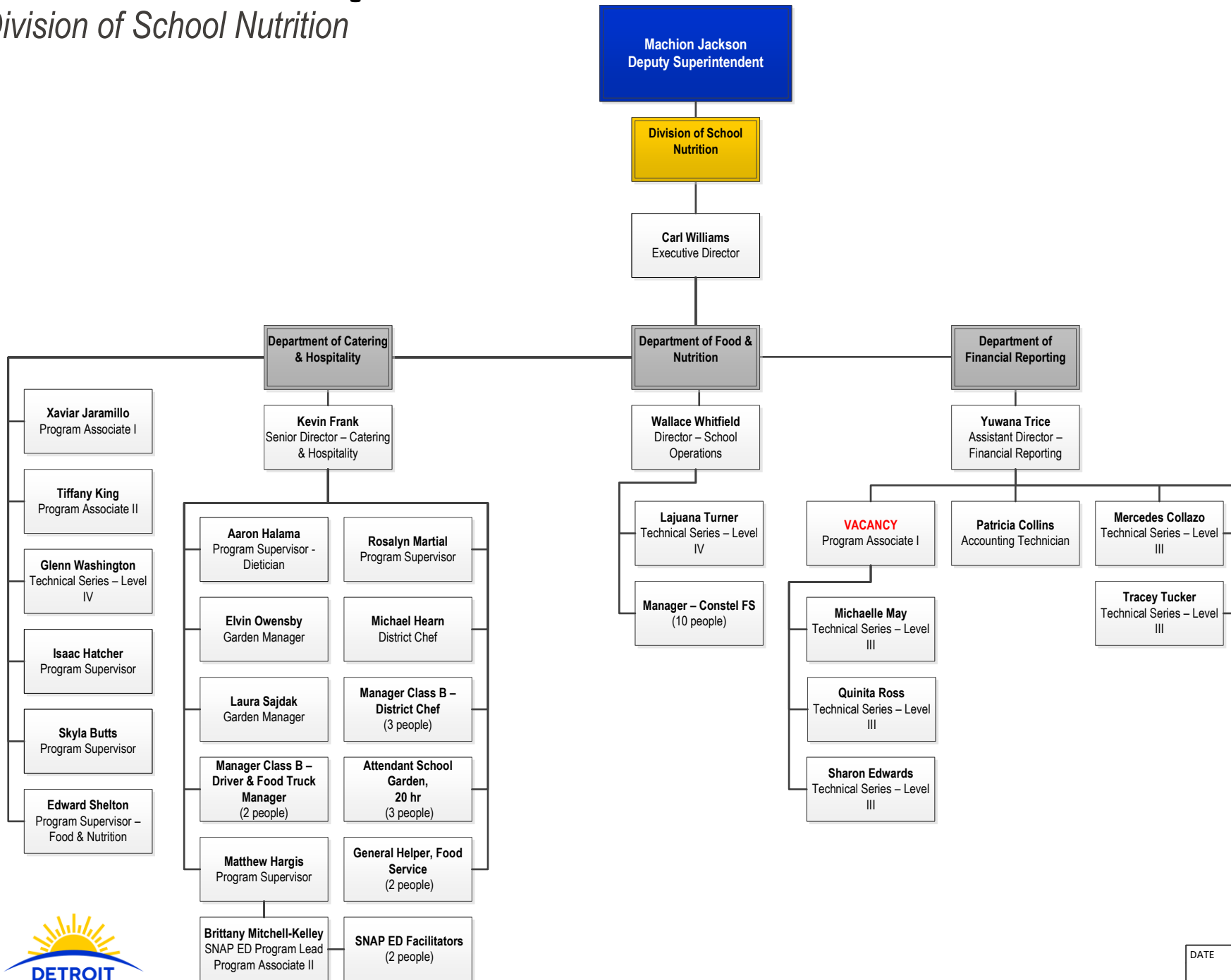


Office of Operations



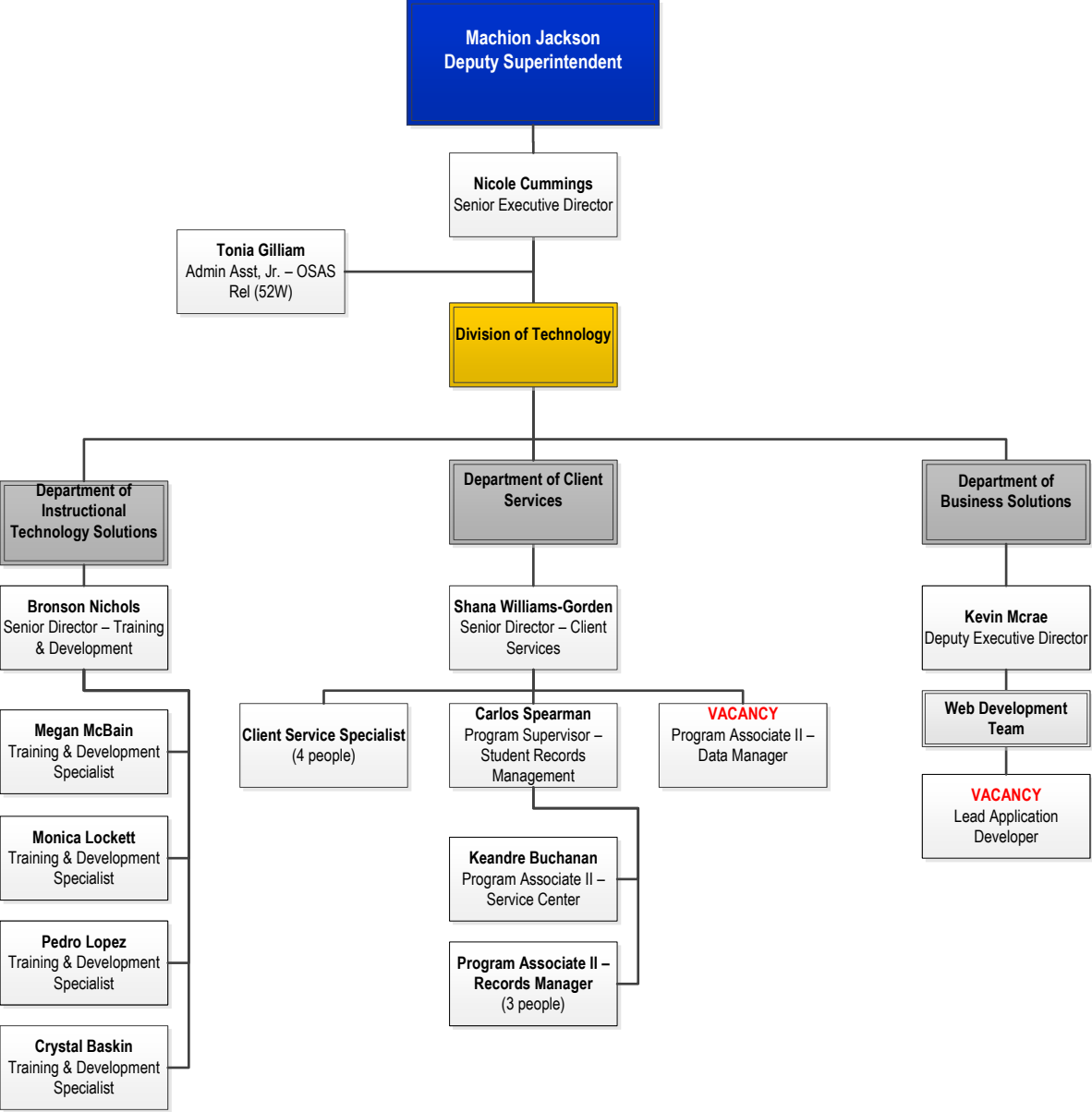
Office of Operations

Division of School Nutrition



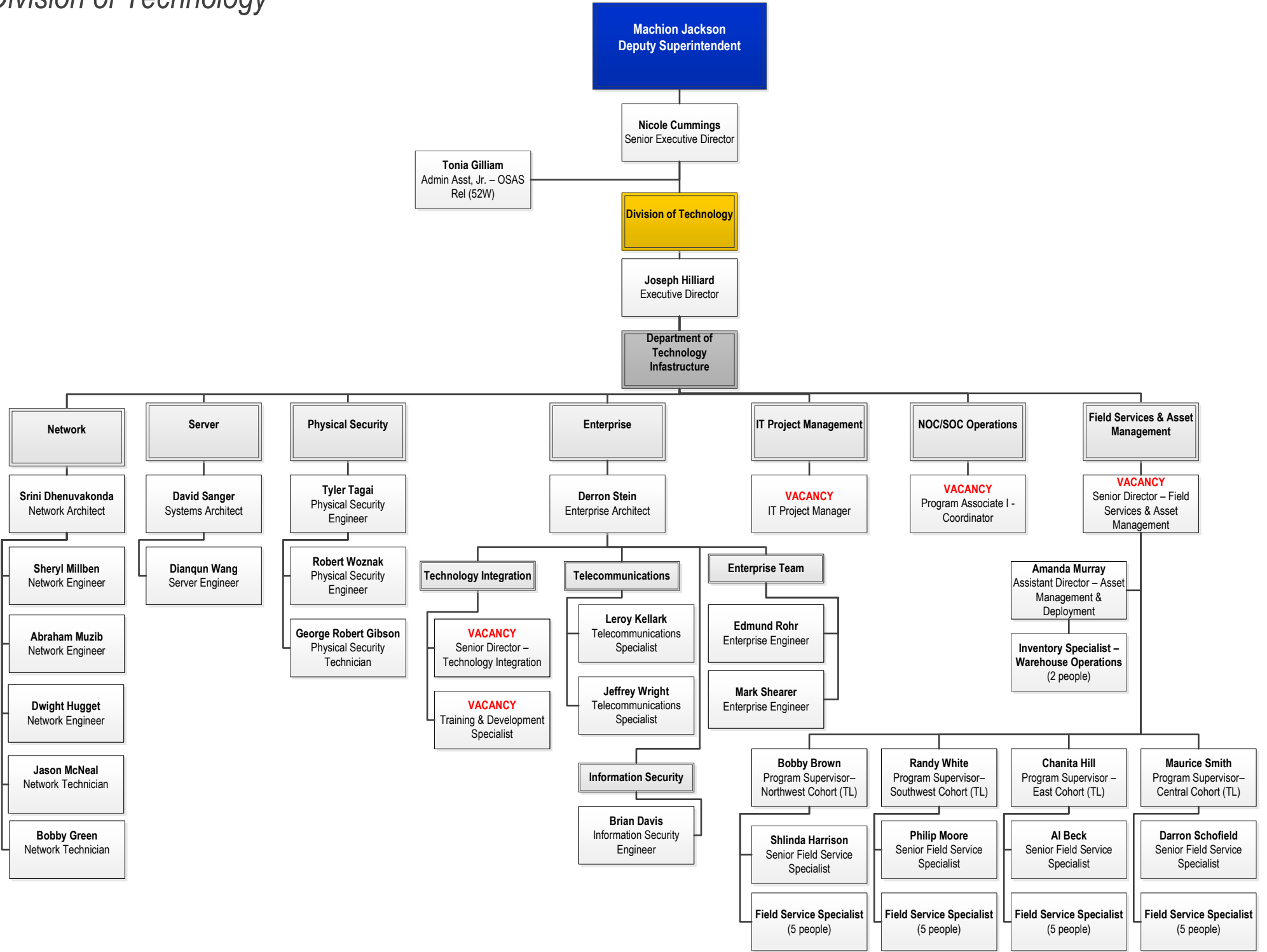
Office of Operations

Division of Technology



Office of Operations

Division of Technology



Office of Human Resources

